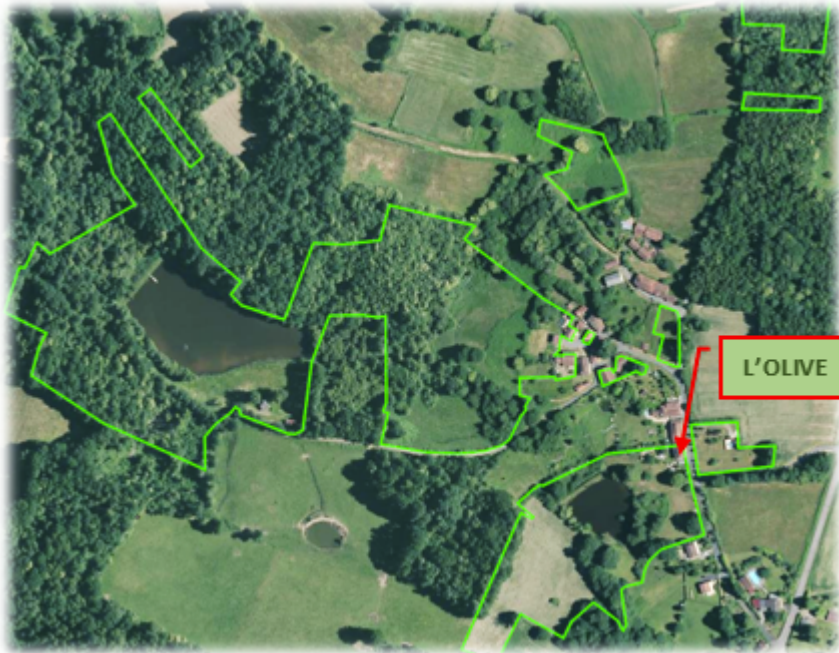


# L'OLIVE welcome booklet

Hello and welcome, you've arrived safely in the heart of the Périgord / Limousin region.



We're in the commune of Saint Bazile, known here as "Le Bourg", and the L'OLIVE gîte is located at the entrance to the village of Le Poulhier (in this region, what is commonly called a "Lieu-dit" is called a "Village").

Since January 2020, the Terra Nostra neo-village has been managed by the Terra Nostra association, a collective of 5 people whose mission is to promote village living that respects all living things: women, men, children and the environment.

Here we produce a large part of our food (vegetables, fruit and animal proteins), and all our heating energy comes from our forests. The almost 200m<sup>3</sup> of water we need each year for our gardening activities are collected and stored locally (roofs, wells, ponds), and little by little we're becoming more self-sufficient in other areas (dry toilets, solar oven, wood-burning oven, bicycle transport, etc.). Your visit to us is part of this quest for autonomy, thanks to your financial contribution, which goes some way towards covering the costs of the site.

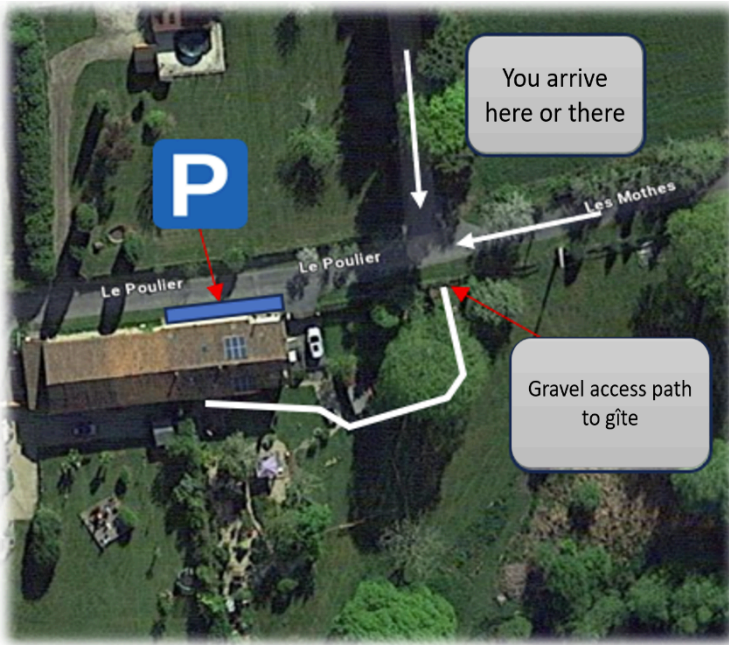
If you're curious about this introduction and want to find out more, you'll find plenty of information on our website [www.casa-terranostra.fr](http://www.casa-terranostra.fr), particularly in the "Library" section, where you'll find our book, which can be downloaded free of charge or purchased from our publisher for 12€ (we may also have some in stock - just ask, again for 12€). It's also possible to take you on a tour of the Terra Nostra neo-village (duration 2-3 hours) by appointment for €10 per person.



# Day-to-day

## On arrival:

Please park in the designated area at 21, le Poulier in the commune of Saint-Bazile (45.74526121779036, 0.8042088000000001), to the rear of the house (spaces indicated **P** below).



From here, you'll see the "Gîte L'Olive" entrance sign after the hedge that extends from the gate, indicating the access path.

We'll do our best to come and greet you, but your arrival does not necessarily correspond to our availability, you'll probably have to settle in on your own.

You'll find the keys in the box at the end of the driveway. We'll send you the code by email or SMS.

## Parking area





### **Internet:**

The wifi code is located under the television.

### **Kitchen kit:**

Meals are not provided for the rental, but you will find something to tide you over on arrival. Sugar, tea, coffee pods, jam from our orchard, salt, pepper, vinegar and oil are available on the kitchen counter.

### **Garden furniture and barbecue:**

In the rooms shown in the photo, you'll find additional garden furniture (extra parasols, chairs and sideboards, etc.). You'll also find an easy-to-use gas barbecue, which you'll be asked to cover (once it's cooled down) when you're not using it, to keep it in good condition. Cooking utensils are stored in the barbecue's storage area. Always close the bottle after use.



### **Housekeeping and check out:**

The house has been thoroughly cleaned prior to your arrival.

Before you leave, we ask that you sweep and vacuum the entire house, that the toilets and bathrooms are clean, that the dishes are washed and put away and that the rubbish bins are emptied. Unless you wish to check out before your departure, you can leave and let the keys in the key box.

### **Fan:**

Useful in hot weather, or to distribute the heat from wood-burning stoves in the living room in winter. The rotation of the main fan is activated by the cord on the left of the photo (the shortest). The first impulse starts at speed 3, the second at speed 2, and so on until the 4th impulse to return to blade stop.



### **TV and DVD:**

In the living room, you'll find a Smart TV connected to a DVD player with a selection of films. The TV is connected to a bouquet of 90 free Internet channels. You won't find TF1, but you will find 20 movie channels, a dozen youth channels, 6 sports channels and 10 news channels.

### **Board games, hiking:**

In the large bedroom (pink room), you'll find a chest of drawers with a multitude of board games. In this welcome booklet, you'll also find leaflets with information on hiking trails, some of which start at Le Poulrier.

### **Selective sorting:**

We put 3 garbage containers at your disposal.

- one for bio-waste called "Compost", which you can empty into the composts at the bottom of the garden.

- another for recycling, to be deposited in the sorting bins before you leave.

(Here, all plastics, rigid and flexible, dirty and clean, go into the bins).

- one for household waste, to be emptied before you leave into the large garbage container outside (at the end of the path near the road).



### **Septic tank and Sanitary plumbing:**

Like all village houses, the gîte here is connected to a septic tank. Please do not pour any aggressive products into the pipes, as they are not recommended for this use.

The toilets in the laundry room are what we call Sanibroyeur, so please don't throw anything into them (no sanitary towels, tampons, etc.). A garbage can is provided for this purpose.

### **Operating manuals :**

In the laundry room, you'll find all the user manuals for the gîte's appliances in a red pouch.

### **Change of bed and bathroom linen :**

For long stays and in the interest of preserving the environment and water resources, we change bed sheets and towels after the 15<sup>th</sup> night.

# Recommendations for winter:

## Use of wood-fired heating (boiler stove) :

### **What is a wood- boiler stove?**

Also known as a "boiler stove", the wood-boiler stove operates in the same way as a boiler. The heating system consists of a wood-burning stove to which a cold water circuit is connected for reheating. Finally, the circuit also connects to a buffer tank to store the hot water.

Here, the fuel required to operate the boiler stove is wood.

So all you need to do to heat your home is light a big fire and keep it going.

In colder weather, we'll do the necessary work before you arrive, but you'll need to keep the stove burning to maintain the temperature.

For good heat distribution in the living room, we recommend turning on the fan above the staircase.

Please note: the radiators in bedroom 3 (the small one) must never be closed.



## Using the wood-fired stove:

In winter, you can use your wood-fired stove to keep warm

as well as for cooking in the oven or on the hob.

Nothing could be simpler: build a fire in the left-hand section, opening the the air intake above the firebox.

If you want to cook briskly, you can open the second air inlet at the bottom left of the firebox.

To heat up the oven, pull on the small knob in the top right-hand corner.



## Wood procurement:

Once you've used up the stock in the house, you can replenish it in the wood shed outside.



## Environmental care:

We're very concerned about the quality of our environment, and that of our neighbors downstream from our ponds and streams. To help preserve this natural setting, please bring organic hygiene products. To this end, in the bathrooms you'll find a home-made soap (which you can take home with you), the waste from which will not pollute the site or your skin.

You won't be using products that are not recommended for septic tanks (bleach, chlorine, soda, acid, hydrocarbons).

**The pond** in the park is not suitable for bathing due to the presence of coypu which, like virtually all rodents, can be carriers of leptospirosis, which is transmitted to humans by contact between the urine of infected animals and our mucous membranes (nose, mouth, eyes, wounds). Dipping your feet in the pond is completely risk-free, but using it as an Olympic-size swimming pool can be potentially dangerous.

We accept no responsibility if you choose to swim there anyway.

In winter, it can be covered in ice: never venture to walk on it.

You can fish in the pond (equipment not supplied). All fish caught must be returned to the water, and no poaching of any kind is permitted.

### **The animals :**

Sheep and chickens live in your garden.

Please do not feed them, and make sure to close any fence gates you cross.

### **Planting:**

They're there for your enjoyment and the pleasure of your eyes.

You are welcome to pick a few apples or cherries for private consumption, if in season.

The vegetables growing in the bins are private, so please don't help yourself.

You can, of course, pick a little thyme at the foot of the house.



## Do your shopping:

### Groceries:

In Saint-Bazile, Guillaume, the farmer-baker from the Laubanie village farm, is open for business on Wednesdays and Fridays from 4:30 to 6:30 pm. His breads are good and can be kept for several days in a cloth (it's best to come to the opening to have a choice). Opposite the farm, you can buy organic cow's milk from Sanna and Hermann.

1Kg country or wholemeal bread, 700g nuts and grapes or seeds or einkorn wheat or rye bread, 500g buckwheat bread, 2Kg pie, 600g nordic and 300g pizza dough. Possible to order on 09 72 97 68 16.

In Vayres (2.5 km), there's a small grocery store called "LA FAMILIALE" for emergency supplies.

The first supermarkets are 7 km away (Oradour-sur-Vayres or Saint-Mathieu). You'll also find a gas station and cash dispensers (Crédit Agricole).

If you've enjoyed our homemade soaps, would like to taste our cheeses, read our books, etc., we can sell you some depending on our stocks.



### Markets and fairs:

MARVAL (18km): food and craft market held every Sunday morning, with over twenty exhibitors of quality regional products.

PIEGUT (20km): the largest market in the region. In summer, it stretches over 1km of stalls. It includes crafts, food and tourist stalls. You can also enjoy a refreshing drink on one of the cafe terraces between 2 purchases. The Piégut market takes place every Wednesday.

SAINT JUNIEN (21km): Stallholders set up in Saint Junien town center on Saturday mornings, mainly with food stalls.

In Saint-Bazile, the markets are mostly festive occasions, organized around a meal with an average of 15 to 20 exhibitors, mostly craftsmen. A must if you're staying with us at that time of year is the crafts festival in August, with around 80 exhibitors, the town totally privatized for the event, demonstrations, games for the kids, and a hearty meal typical of the Limousin region and prepared by the locals. You'll find the program of Saint Bazile festivities in this binder.

Marché de Piégut



Marché de Marval



## Eating and drinking nearby

There's not a plethora of restaurants in the area, but some are well worth a visit.

- **La Taverne de Montbrun** optional medieval castle tour (in English)
  - o 7 Route du Château, 87230 Dournazac
  - o Menus from €33 to €55
  - o <http://www.lataverne.info/> tel : +33 6 71 56 16 74
  - o **On reservation and on our behalf:**
    - o tour and lunch (starter-main course or main course-dessert): €35
    - o tour, welcome aperitif, dinner: €50
- **Le Relais de Comodoliac**
  - o 22-26 Av. Sadi Carnot, 87200 Saint-Junien
  - o Monday to Saturday: 12:00-14:00, 19:30-21:00
  - o Prices from €22 to €42 (children's menu €12) (2023 prices)
  - o [www.comodoliac.com](http://www.comodoliac.com) tel : 05 55 02 27 26 (+33 5 55 02 27 26)
- **La Grange du Lac**
  - o 3 Les Champs, 87440 Saint-Mathieu
  - o À la carte (dishes from €15 to €20 - children's menu €10) (2023 prices)
  - o tel : 05 55 39 08 20 (+33 5 55 39 08 20)
- **Lauryvan**
  - o 200, allée du Bois au Bœuf, 87200 ST-JUNIEN
  - o Restaurant: 12:00 to 13:30 Tuesday to Sunday, 19:30 to 21:30 Tuesday to Saturday (closed Thursday evening) / €48
  - o Formule bistrot (lunch, Tuesday to Friday)
  - o <https://lauryvan.fr/> tel : +33 6 71 56 16 74
- **Le Moulin de la Tardoire**
  - o Lieu-dit « Forge » 16220 MONTBRON
  - o Menus from €29.50 to €90
  - o <https://www.moulinelatardoire.fr/> tel : 05 45 66 41 46 (+33 545 66 41 46)
- **Le Complexe Village**
  - o 1 Allée du tennis, Chaillac sur Vienne
  - o Restaurant - Churrasco Charcoal Grill, Steak House & Artisan Burgers - Tapas Bar
  - o Bowling (7€), LaserGame (6€-10min), Children's playground (6€), Foot-Salle (70/h)
  - o <https://lecomplexe-village.com> tel : 05 55 02 52 11 (+33 5 55 02 52 11)



# Things to see and local events

Our region is rich in history and scenery, and bustling with cultural events. Here are just a few examples:

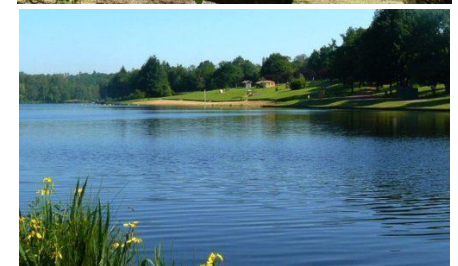
- We invite you to visit our Terra Nostra village, where we'll spend around 3 hours explaining pretty much everything we do here, how and why... Try your hand at milking goats (depending on the season), find out how we make cheese, learn about the principles of natural farming and much more.  
We'll explain how we're experimenting with a sustainable way of life, while preparing for climate and social change.



- **The Peyrassoulat site**, a former forge that ceased operations in 1920. It supplied steel to the Ruelle navy in Charente. The remains of these ruins emerge in the midst of abundant vegetation, fed by the Tardoire river below. In what was once a garden, plane and yew trees were planted some 500 years ago; one of the plane trees is listed, with a 40 m span and 6 m circumference. A 10 km hike from Terra Nostra takes you to the site.



- If you fancy a refreshing dip, the **Lac de Saint Mathieu** (6km away) and the **Etangs de Haute Charente** (11km) welcome you with their beaches, swimming areas, playgrounds and snack bar.



- **Rochechouart**: A geological peculiarity of the region, a meteorite about 1km in diameter fell some 200 million years ago. The museum (10 km away) gives an idea of this cataclysmic event, of which almost no trace remains.  
You'll also find a museum of contemporary art housed in the town's castle, a contrast that can't fail to impress.



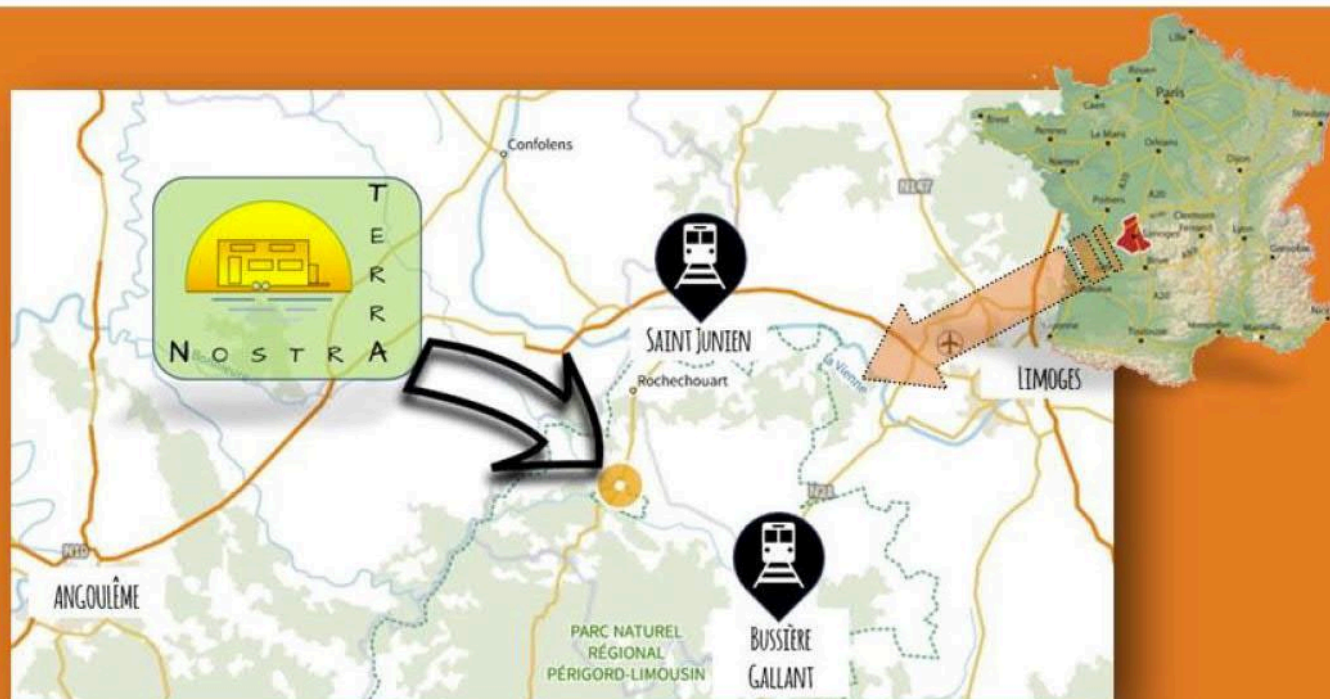
- **In Chassenon (14 km away)**, you'll find the Cassinomagus thermal baths. This Gallo-Roman building is one of the best-preserved ancient archaeological sites in Europe! As well as the historical interest, you can enjoy an open-air escape-game.



- **The Oradour sur Glane remembrance center** (34km) remains a must-see museum in the region (martyred town) (closed from 2025 to 2027).



- **Hiking**: A wide selection of circuits to be found in this binder.



**21 Le Poulhier, 87150 Saint Bazile**  
**Gérant : Association Terra Nostra**  
**Tél: (09) 75 59 26 69 / (06) 50 47 31 75**  
**e-mail: [contact@casa-terranostra.fr](mailto:contact@casa-terranostra.fr)**